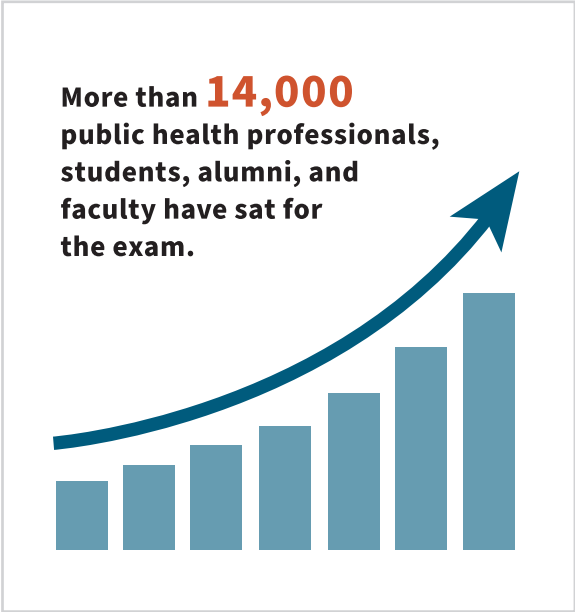


Where Do I Get Certified?

The Certified in Public Health Examinations are delivered via Live Online Proctoring or at computer-based testing centers throughout the United States and at select international locations.



Explore [NBPHE.org/eligibility](https://nbphe.org/eligibility) to find out if you are eligible to get certified.

Why Should I Be Certified in Public Health (CPH)?

The Certified in Public Health is the only credential that demonstrates not only your knowledge of key public health sciences, but also your commitment to the field through continuing education focused on emerging and established public health issues. It is crucial for public health professions to stay current in this rapidly evolving field.



Stay current on best practices and education



Meet and maintain professional standards



Increase recognition of the public health professions



Invest in your career



Evidence of mastery of public health sciences



Potential for promotions and salary increases



Distinguish yourself from peers



Go beyond your education



Raise the visibility of public health



About NBPHE

The National Board of Public Health Examiners (NBPHE) was founded to certify public health professionals. NBPHE and its participating organizations have the goal of strengthening the practice of public health, including facilitating recognition of the important role of public health workforce in protecting the public’s health and safety.

Founding Organizations:

- American Public Health Association (APHA)
- Association for Prevention Teaching and Research (APTR)
- Association of Schools and Programs of Public Health (ASPPH)
- Association of State and Territorial Health Officials (ASTHO)
- National Association of County and City Health Officials (NACCHO)

Members, students and employees of many organizations are eligible for discounts for the CPH exam.

To find out more about discounts, visit [NBPHE.org/cph-fees-discounts](https://nbphe.org/cph-fees-discounts).



National Board of Public Health Examiners

Tel: 202-296-3050
Email: info@nbphe.org
[NBPHE.org](https://nbphe.org)



[NBPHE.org](https://nbphe.org)



TAKE YOUR PROFESSIONAL
DEVELOPMENT TO
THE NEXT LEVEL.

What Do I Need to Know?

The CPH exam is 200 multiple-choice questions, based on the ten domain areas of public health.

As the field of public health changes over time, updates to the content outline ensure the exam measures competency in current public health roles and responsibilities. The National Board of Public Health Examiners (NBPHE) conducts a Job Task Analysis (JTA) every five to seven years to update the CPH examination. The most recent update was on August 1, 2024.

CPH Content Domain Areas:

Data, Analysis, and Informatics
(12%)

Communication
(12%)

Leadership
(9%)

Law and Ethics
(8%)

Disease Prevention and Injury Reduction
(11%)

Program Planning and Evaluation
(11%)

Program and Resource Management
(9%)

Policy and Advocacy
(8%)

Health Equity and Social Justice
(10%)

Community Engagement and Partnership
(10%)



Scan QR Code for CPH Domain Details

To register for the CPH exam or for more information, visit [NBPHE.org](https://www.nbphe.org)

How Do I Prepare to Get Certified?

Visit [NBPHE.org/cph-study-resources](https://www.nbphe.org/cph-study-resources) to find several resources including:

- CPH Content Outline
- Practice Exams
- Sample Questions
- Study Guides
- CPH Virtual Review Series
- In-Person Review Sessions


What Will Be Required to Maintain My CPH Status?

CPH professionals are required to earn and report 30 hours of professional development every two years. A convenient online CPH Recertification & Reporting System is available to all certificants. It includes digital badging, a digital certificate, a Code of Ethics and secure processing for credit card payments.

Get Involved



Keep up with all things CPH on social media at [NBPHE.org/follow-us](https://www.nbphe.org/follow-us)



Interact with your peers and earn certification credit with our CPH Book Club at [NBPHE.org/bookclub](https://www.nbphe.org/bookclub)



Want to represent the CPH to your public health community? Reach out to join our Ambassador Program at ambassadors@nbphe.org

Join the ranks of public health professionals who have become Certified in Public Health.



“The CPH shows my employer that I am set apart in my field. In a sea of qualified applicants, this distinction helps me to stand out from the competition, establishing a precedent that communicates that I am able to rise above the minimum work necessary and raise the standard for my work and professionalism.”

- Jack Austin Phillips, MPH, CPH
Healthcare Data Analyst | Propel Health



“The CPH is not just a credential to me; it is a tool to help me make thoughtful decisions and a wonderful way to stay on top of new research and practices within the field. With the CPH, I am able to focus on the most vital things when making decisions intended for a healthier community.”

- LCMR Jennifer Clements, MPH, CPH, MCHES®
Health Services Officer | U.S. Public Health Service